

AKUMA

OSAZOVACÍ TABULKY

OSOBNÍ AUTOMOBILY, NÁKLADNÍ AUTOMOBILY
A ZEMĚDĚLSKÁ TECHNIKA

APPLICATION CATALOGUE

CAR, TRUCK AND AGRICULTURAL APPLICATION



AKUMA[®]
B A T E R I E

KOMFORT PLUS

Zvýšený startovací výkon ve všech situacích
Increased starting power in all situations

Vylepšené víko s centrálním odplynovacím systémem
Consistent cover with centralized degassing system

Kontrolní systém – magické oko
Check control system

Bezúdržbová baterie, díky technologii olovo/vápník
Maintenance free thanks to the Lead/Calcium technology

Nízké samovybíjení
Low auto discharge

Vyšší odolnost vůči korozi
Higher corrosion resistance



KOMFORT

Víko s centrálním odplynováním
Cover with centralized degassing system

Bezúdržbová baterie, díky technologii olovo/vápník
Maintenance free thanks to the Lead/Calcium technology

Nízké samovybíjení
Low auto discharge

Vysoká odolnost vůči korozi
High corrosion resistance



TRUCK-TOR Heavy Duty

Vynikající poměr mezi startovací energií
a odolností při cyklickém zatěžování baterie
*Excellent ratio between starting power
and cycling capacity*

Vysoká odolnost vůči vibracím
High vibration resistance

Redukované samovybíjení
Reduced auto discharge

Nízká spotřeba vody
Low water consumption





KOMFORT PLUS

Typ Type	Ah	A EN	Typ pólů Terminal	Uspořádání článků Layout	Uchycení Hold down	Schéma Layout	Rozměry Dimensions
L1B 46*	46	450	1	0	B13/B15		
<p>FORD: C-Max 1.6 - Fiesta V 1.4, 1.6 - Focus C-Max 1.6 (Ti) - Focus II 1.6 (Ti) - Fusion 1.4, 1.6 - KA 1.6 Sportka - Streetka 1.6 MAZDA: 2 Demio 1.2, 1.4 16V NISSAN: Almera 1.5, 1.8 - Micra 1.2, 1.4 16V - Note 1.4 - Primera 1.6, 1.8 16V (SW) OPEL: Agila 1.2 16V - Corsa C 1.2 I 16V - Speedster 2.0 Turbo SUZUKI: Ignis II 1.3, 1.5 (4x4)(Sport) - Splash 1.2 - Swift III 1.5, 1.6 16V Sport - Wagon R+ 1.3 I 16V (4x4) TOYOTA: Yaris 1.0 16V, Verso 1.3</p>							
L1 55	55	480	1	0	B13		
<p>ALFA ROMEO: 147 1.6 16V - 156 1.6 I, 1.8 I 16V (SW) CITROEN: C1 1.4 HDi - C2 1.4 (16V) - C3 1.4 HDi - C3 Pluriel 1.4 I - C4 1.4, 1.6 16V - C4 Coupé 1.4, 1.6 DACIA: Logan (SW) 1.4, 1.6 FIAT: Bravo 1.4 T-Jet - Doblo 1.6 - Idea 1.2, 1.3 JTD, 1.4 - Idea Van 1.3 MJT, 1.4 Benzina - Multipla 1.6 - Panda 1.2 (4x4)(Van), 1.3 JTD (MJT)(4x4), 1.4 - Punto 1.3 JTD (MJT), 1.4, 1.8 - Stilo 1.4 HYUNDAI: Accent GLS 1.3, 1.5 - Elantra GLS 1.6 - Getz 1.3, 1.4, 1.6 - Matrix 1.6, 1.8 LANCIA: Y 1.3 JTD - Ypsilon 1.3 MJT MERCEDES: A 140 NISSAN: Qashqai 1.6 PEUGEOT: 1007 1.4, 1.6 - 206 1.4 (SW), 1.6 (CC) (Cabrio) (SW) - 207 1.4 (SW), 1.6 (CC)(SW) - 306 1.6 SW - 307 1.4 (SW), 1.6 (CC)(SW) - 308 1.4, 1.6 - 407 1.7, 2.2 - Ranch 1.6 RENAULT: Clio III 1.2, 1.4, 1.6 16V - Megane II 1.4 (SW), 1.6, 2.0 16V - Modus 1.4, 1.6 - Scenic Evol. 1.4 - Twingo 1.2 Turbo SKODA: Fabia 1.4 (Praktik), 1.6 TOYOTA: Yaris 1.8 VVTi VOLKSWAGEN: Golf V 1.4 16V (Plus)(Variant)(FSI)(TSI)</p>							
L2B 60*	60	600	1	0	B13/B15		
<p>FORD: C-Max 1.8, 2.0 - Escort VI 1.8, 2.0 - Fiesta IV 1.6 I Ghia 16V - Focus II 1.8, 2.0, 2.5 ST - Galaxy 2.0 I, 2.3 I - Mondeo IV 1.6 Ti, 2.0, 2.5 - Puma - S-Max 2.0, 2.5 ST NISSAN: Almera II 1.5 dCi OPEL: Astra 05 1.4, 1.6, 1.8 - Astra H 1.6, 1.8 SW (Twin Top) - Astra H 1.6, 1.8 Turbo (GTC) - Corsa C 1.4, 1.6 16V - Meriva 1.4, 1.6, 1.8 16V - Signum 1.8 - Tigra 1.8 Twin Top - Vectra C 1.8 (Break)(GTS) - Zafira 1.6 I, 1.8 I 16V SEAT: Alhambra - Ibiza 1.5 TOYOTA: Avensis 1.8 16V VOLKSWAGEN: Corrado 2.0I - Golf III 1.4, 1.6, 2.0 GTI - Passat 1.8, 2.0, 2.8 VR6 - Polo 1.6 - Vento 1.8</p>							
L2 65	65	570	1	0	B13		
<p>ALFA ROMEO: 156 2.0I JTS (SW), 1.9 JTD - 159 1.9 JTDm - 159 1.9, 2.2 JTS (SW) - Brera 2.2, 3.2 JTS V - GT 1.8 16V, 2.0 (JTS), 3.2 V6 - GT 1.9 M-JET - Spider 2.2, 3.2 JTS AUDI: A3 1.8 TFSI - A3 Sportback 1.6 TFSI - A4 (Avant) 1.6, 1.8, 2.0 TFSI - A4 1.8 TURBO 20 V (Avant) (Quattro) - S3 1.8 (T)(Quattro) - TT 2.0 TFSI CITROEN: C2 1.6 HDi - C4 1.6, 2.0 HDi - C4 Picasso 1.6 i HDi, 2.0 i 16V (Hdi) - C5 1.6 HDi, 1.8 16V (SW), 2.0 (SW) FIAT: Bravo 1.6 MJT, 1.9 MJT - Doblo 1.9 MJT - Grande Punto 1.9 MJT - Idea 1.9 MJT - Multipla 1.9 MJT - Sedici 1.6 16V 4x4 - Stilo 1.6, 1.8 16V JAGUAR: X-Type Estate 3.0 KIA: Carens III 2.0 CVT LAND ROVER: Freelander 1.8 MERCEDES: A 150, 160 MINI: Cooper (Cabrio)(S) - One (Cabrio) MITSUBISHI: Colt VI 1.5 (DI-D)(CZT) NISSAN: Note 1.5 dCi - Qashqai 2.0 OPEL: Vectra B 2.2 16V, 2.5 I V6 PEUGEOT: 1007 1.6 HDi - 107 1.4 HDi - 207 1.6 HDi (SW) (CC) 1.4 HDi - 307 (SW) 2.0 HDi - 308 1.6 HDi - 407 1.6, 2.0 (HDI), 3.0 V6 - 607 2.2 (HDI), 3.0 V6 - 807 2.0 (HDI), 2.2, 3.0 V6 RENAULT: Clio III 2.0 - Laguna 2.0 - Megane 2.0 SAAB: 9-3 1.8 Cabriolet (Sport Sedan), 2.0I (Cabrio) - 9-5 2.0 (SW) SEAT: Altea 1.8 TFSI, 2.0 FSI - Arosa 1.4 TDI - Cordoba 2.0 - Ibiza 1.8 T Cupra R - Leon 2.0 TFSI, 2.8 Cupra 4 - Toledo III 1.8 TFSI SKODA: Octavia 2.0 FSI - Superb 1.8 T, 2.0 SMART: Fortwo Cabrio 0.8 Cdi (Coupé) TOYOTA: Auris 1.6 VVTi - Avensis 2.0, 2.4 - Aygo 1.4 HDi - Corolla 1.6 VVTi - Yaris D-4 VOLKSWAGEN: Bora 1.6 Autom. (Variant) - Eos 1.6, 2.0 FSI - Fox 1.4 TDI - Golf IV 1.6 (Variant) - Golf V 1.6 Plus (FSI) - Jetta III 2.0 TFSI - Lupo 1.4, 1.7 SDI - New Beetle Cabriolet 1.8 T, 2.0 - Passat (Variant) 1.6 (FSI), 2.0 TFSI - Polo 1.6, 1.8 GTI - Sharan 1.8 T - Tiguan 2.0 TFSI - Touran 1.6 (FSI), 2.0 FSI VOLVO: C30 1.8, 2.0 - S40 1.8 - S60 2.4 (Optima) - V40 1.8 (Optima) - V50 1.6, 1.8</p>							
L3B 71* 571 101 068	71	680	1	0	B13/B15		
<p>FORD: C-Max 1.6 TDCi - Fiesta V 1.4, 1.6 TDCi - Focus C-Max 1.6, 1.8 - Focus II 1.6, 1.8 TDCi - Fusion 1.4, 1.6 TDCi - Mondeo III 1.8 SCi SW, 2.0 TDDI JEEP: Cherokee 2.5 TD - Grand Cherokee 2.5 TD NISSAN: Almera II 2.2 dCi OPEL: Agila 1.3, 1.7 CDTI - Astra G 2.0 16V, 2.2 DTI - Astra H 1.3, 1.7, 1.9 CDTI (16V), 2.0 Turbo - Corsa B 1.5 D (TD) - Corsa C 1.7 DI (DTI) - Frontera B 2.2 DTI - Sigm 2.0, 2.2 DTI - Vectra C 2.2 16V, 1.9, 2.2 CDTI - Zafira 2.0, 2.2 16V RENAULT: Clio II 3.0 V6 - Grand Scenic 2.0 - Laguna II 1.9, 2.2 DCI - Megane I 1.5 dCi, 1.9 DCI (DTI)(SW) - Scenic 1.5 DCi - Scenic Evol. 1.9 DCI (DTI), 2.0 SEAT: Cordoba 1.9 D (TD) - Ibiza II 1.9 D (TD) SKODA: Fabia 1.9 SDI (TDI) SUZUKI: Ignis II 1.3 DDi - Splash 1.3 DDiS - Swift III 1.3 DDiS VOLKSWAGEN: Golf II 1.6 D (TD) - Jetta 1.6 D (TD)</p>							

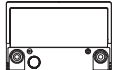
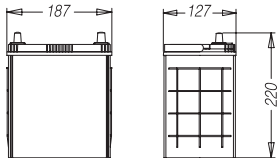

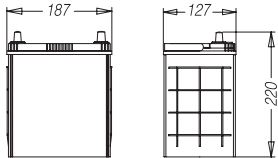
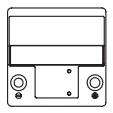
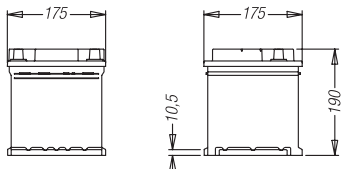
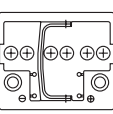
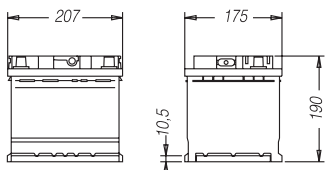
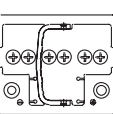
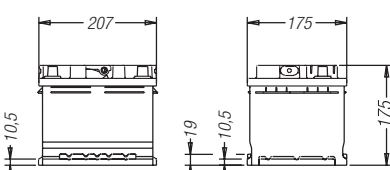
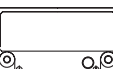
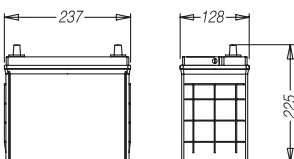


KOMFORT PLUS

Typ Type	Ah	A EN	Typ pólů Terminal	Uspořádání článků Layout	Uchycení Hold down	Schéma Layout	Rozměry Dimensions
L3 80	80	680	1	0	B13		
<p>ALFA ROMEO: 156 GTA Selespeed (SW) AUDI: A4 2.4, 3.2 FSI (Quattro) (Avant) - A4 Cabriolet 2.0 (TFSI) - A6 2.0 (TDI)(TFSI), 2.8 FSI (Quattro) - A6 Avant 2.0, 3.0 (Quattro) BMW (-->'06): 130i - 318 Ci Cabriolet - 320i CITROEN: C6 2.7 Hdi, 3.0 V6 - C8 2.0 HDi FERRARI: 550 Barchetta 5.5 - 599 GTB Fiorano 6.0 FIAT: Ulysse 2.0, 3.0 HYUNDAI: Trajet 2.0 CRDI JEEP: Cherokee 2.8 CRD - Commander 3.7 V6, 4.7 V8, 5.7 V8 - Grand Cherokee III 3.7 V6, 5.7 V8, 6.1 V8 LAND ROVER: Freelander-2 2.0 Td4, 3.2 MERCEDES: A 160 CDI, A 170 CDI, A 190, A 210 - B 150->200 - C 180, 200 Kompressor - C 230, 280 (4-matic) - CLK 200, 240 NISSAN: Navara 2.5 dCi (4WD) - Pathfinder 2.5 dCi 4WD OPEL: Signum 1.9 CDTI - Vectra C 1.9 CDTI PEUGEOT: 407 2.7 Hdi (SW), 3.0 V6 Coupè - 807 2.2 Hdi PORSCHE: 911 3.6 Carrera - 911 3.8 Carrera RENAULT: Espace IV 2.0 (Turbo) - Grand Scénic 1.9 dCi - Laguna III 2.0 dCi - Megane II 1.9, 2.0 dCi SAAB: 9-3 (Cabrio)(SW) 1.9 TiD, 2.0 T, 2.8 T - 9-5 3.0 V6 - 9-5 1.9 TiD (SW) SKODA: Octavia 1.9, 2.0 TDI VOLKSWAGEN: Eos 2.0 TDI - Golf V 2.0 TDI, 2.0 FSI - New Beetle 1.9 TDI - Passat (Variant) 2.0 TDI - Tiguan 2.0 TDI VOLVO: XC70 Cross Country 2.4, 2.5 - XC90 2.5</p>							
L5 100	100	800	1	0	B13		
<p>ALFA ROMEO: 166 3.2 V6 24V BMW (-->'06): 520, 525, 530, 535 d (Touring) - 540, 545 i (Touring) - 650 i (Cabriolet) FERRARI: Scaglietti 5.7 JAGUAR: S-Type 2.5 V6, 4.2 V8 JEEP: Grand Cherokee III 3.0 CRD LAND ROVER: Defender 110 2.4 TD4 4WD - Discovery III 2.7 TD, 4.4 - Range Rover III 3.6 TD 8, 4.2 Sport MERCEDES: C 350 - C 63 AMG - CL 55 AMG, 600 - E (-->'07) 200 Kompressor, 280, 350 - G 270, 320, 400 CDI - ML (-->'05) 270, 400 CDI - ML (-->'05) 320, 350, 500, 55 AMG - S (-->'05) 320, 400 CDI - S 55 AMG, 320, 430, 500, 600 - SLK (-->'04) 32 AMG, 320 PORSCHE: Cayenne 3.2, 3.6 - Cayenne Turbo S 4.5, 4.8 VOLKSWAGEN: Touareg 5.0 V10 TDI</p>							



KOMFORT

Typ Type	Ah	A EN	Typ pólů Terminal	Uspořádání článků Layout	Uchycení Hold down	Schéma Layout	Rozměry Dimensions
B19J 35	35	280	3	0	B00	-  +	
DAIHATSU: Charade 1.3, 1.5 Sedan, 1.6 GTI - Copen 0.7, 1.3 - Cuore 1.0 - Domino 850 - Feroza - Materia 1.3, 1.5 - Move 847 I - Sirion 1.0, 1.3 (DVVT) - Terios 1.3 4WD CX, 1.5 16V 4WD (DVVT) - Trevis 1.0 - YRV 1.0, 1.3 HONDA: Jazz 1.2, 1.4 HYUNDAI: Atos Prime 1.1 MAZDA: Bongo 1.3 NISSAN: Sunny 1.3 PEUGEOT: 405 1.6 SEAT: Ibiza 1.3 SKODA: Favorit 1.3 TOYOTA: Aygo 1.0 VOLKSWAGEN: Polo 1.3							
B19JX 35	35	280	3	1	B00	+  -	
DAEWOO: Matiz 0.8, 1.0 SUZUKI: Alto 1.0 - Carry - Jimny 1.3 16V 4WD - Super Carry - Swift III 1.3 16V (4x4)							
L0 40	40	330	1	0	B13	-  +	
CITROEN: C1 1.0 - 2CV - Dyne 4, 6 FIAT: 500 1.2 - Grande Punto 1.2, 1.4, 1.4 Van(B) - Punto 1.1 Van, 1.2 (Van) - Seicento 1.1 LANCIA: Musa 1.4 Oro, Platino - Nuova Musa 1.4, 1.4 16V - Ypsilon 1.2, 1.4 (16V) PEUGEOT: 107 1.0 TOYOTA: Aygo 1.0 - Yaris 1.0 VVT-i							
L1 44	44	390	1	0	B13	-  +	
ALFA ROMEO: 146 1.4, 1.7, 1.8 - 147 1.6 16V CITROEN: Berlingo 1.6, 1.8 (Multispace) - C1 1.4 HDi - C2 1.1, 1.4 (16V) - C3 1.4, 1.6 - C4 1.4, 1.6 16V DAECIA: Logan (SW) 1.4, 1.6 FIAT: 500 1.4 16V - Bravo 1.4 T-Jet - Doblò 1.3 MJT - Fiorino 1.3 MJT - Grande Punto (Van) 1.3 MJT - Idea 1.2, 1.3 MJT, 1.4 - Idea Van 1.4 - Multipla 1.6 - Panda 1.2 (4x4)(Van), 1.3 JTD (MJT)(4x4), 1.4 - Punto 1.3 JTD (MJT), 1.4, 1.8 - Stilo 1.4 HYUNDAI: Accent GLS 1.3, 1.5 - Elantra GLS 1.6 - Getz 1.3, 1.4, 1.6 - Matrix 1.6, 1.8 LANCIA: Y 1.3 JTD - Ypsilon 1.3 MJT NISSAN: Almera 1.5, 1.8 - Qashqai 1.6 PEUGEOT: 1007 1.4, 1.6 - 206 1.4 (SW), 1.6 (SW) - 207 1.4 (SW), 1.6 (SW) - 306 1.6 SW - 307 1.4 (SW), 1.6 (SW) - 308 1.4, 1.6 - 407 1.7, 2.2 - Ranch 1.6 RENAULT: Clio III 1.2, 1.4, 1.6 16V - Megane 1.4, 1.6 16V - Modus 1.2, 1.4, 1.6 - Scenic Evol. 1.4 - Thalia 1.2 16V - Twingo 1.2 Turbo ROVER: 25 1.4, 1.6 - 45 1.4, 1.6 - 45 1.4, 1.8 SKODA: Fabia 1.4 (Combi)(Praktik), 1.6 (Combi) TOYOTA: Yaris 1.8 VVTi VOLKSWAGEN: Golf V 1.4 16V (Plus)(Variant)(FSI) (TSI)							
L1B 44*	44	420	1	0	B13/B15	-  +	
FORD: C-Max 1.6 - Escort VI 1.1, 1.3, 1.4, 1.6 - Fiesta V 1.2, 1.4 - Fusion 1.2, 1.4 - Ka 1.3 MAZDA: 2 Demio 1.2, 1.4 16V NISSAN: Almera 1.5, 1.8 - Micra 1.0, 1.2, 1.4 16V - Note 1.4 - Primera 1.6, 1.8 16V (SW) OPEL: Agila 1.0, 1.2 16V - Corsa B 1.0, 1.2 - Corsa C 1.0 I 12V, 1.2 I 16V - Speedster 2.0 Turbo SEAT: Ibiza 1.2, 1.4 SUZUKI: Ignis II 1.3, 1.5 - Splash 1.0, 1.2 - Swift III 1.5, 1.6 16V Sport - Wagon R+ 1.3 I 16V (4x4) TOYOTA: Yaris 1.0 16V, Verso 1.3 VOLKSWAGEN: Maggiolino - Polo 1.2, 1.3, 1.4							
B24J 45	45	330	3	0	B00	-  +	
DAIHATSU: Applause 1.6, 1.6i - Cuore L201 - GTI Turbo - Terios - Valera 1.5 NISSAN: Micra 1.0i, 1.3i TOYOTA: Corolla 1.4 16V (SW) - Yaris 1.0i 16V							

* Pro staré modely Ford použijte prosím adaptéry. / Old Ford model, please use specific adaptors.


KOMFORT

Typ Type	Ah	A EN	Typ pólů Terminal	Uspořádání článků Layout	Uchycení Hold down	Schéma Layout	Rozměry Dimensions
B24JX 45	45	330	3	1	B00		
HONDA: Civic 1.8 VTEC, 2.0i TD (Aerodeck) SUBARU: Justy 1.2, 1.3 SUZUKI: Baleno 1.6i - Grand Vitara 1.6i, 2.0i Wagon - Jimny 1.3i 4WD(Cabrio) - Samurai 1.3i - Vitara 1.6i Cabrio JLX DLS TOYOTA: Yaris 1.3i (Verso), 1.5i							
L2 55	55	480	1	0	B13		
ALFA ROMEO: 164 2.0 CITROEN: AX 1.4 D - 14 RD, 14 TRD, 1.5 D FIAT: Tipo 2.0 - Panda 1.3 D PEUGEOT: 205 1.9 Cabrio - 1.9 GT, GTI - 106 1.4 D - 206 XAD							
L2 60	60	510	1	0	B13		
ALFA ROMEO: 147 1.9 (JTD)(MJT) - 147 2.0 - 156 1.6 (SW), 2.0i JTS (SW), 1.9 JTD - 159 1.8 (SW), 1.9 JTDm - 159 1.9, 2.2 JTS (SW) - Brera 2.2 - GT 1.8, 2.0 (JTS), 1.9 MJT - Spider 2.2 JTS AUDI: A3 1.8 TFSI - A3 Sportback 1.6 TFSI - A4 1.6, 1.8 TFSI, 2.0 TFSI - A4 1.8 T (Avant) (Quattro) - A4 Avant TFSI 1.6, 1.8, 2.0 - S3 1.8 (T)(Quattro) - TT 2.0 TFSI (Roadster) CITROEN: C2 1.4, 1.6 HDi (Pluriel) - C4 (Coupé) 1.6 HDi - C4 Picasso 1.6 i 16V (HDi) - C5 1.6 HDi, 1.8 (SW), 2.0 (SW) FIAT: Bravo 1.6 MJT, 1.9 MJT - Doblo 1.9 JTD (MJT) - Grande Punto 1.9 MJT - Idea Van 1.9 MJT - Multipla 1.9 MJT - Punto 1.9 JTD - Scudo 1.6 HDi - Sedici 1.6 4x4 - Stilo 1.6, 1.8 16V KIA: Carens 2.0 CVT - Cerato 1.6 MINI: Cooper (Cabrio)(S) - One (Cabrio) MITSUBISHI: Colt VI 1.5 (DI-D)(CZT) NISSAN: Note 1.5 dCi - Qashqai 2.0 OPEL: Vectra B 2.2 16V PEUGEOT: 1007 1.4 HDi - 107 1.4 HDi - 206 1.4 (HDi), 2.0 CC - 207 1.4, 1.6 (HDi) - 307 (SW) 1.4, 1.6 HDi - 308 1.6 HDi - 406 2.0 HDi - 407 1.6 HDi - 607 2.2 (HDi) - 807 2.0 (HDi), 2.2 RENAULT: Clio 2.0 - Kangoo 1.5 DCI, 1.6 - Laguna 2.0 - Megane 2.0 SAAB: 9-3 1.8 Cabriolet (Sport Sedan) - 9-5 2.0 (SW) SEAT: Altea 1.6 FSI, 1.8 TFSI - Arosa 1.4 TDI - Cordoba 1.6 (Vario) - Ibiza 1.6 - Leon 1.6, 1.8 T - Toledo 1.6, 1.8 TFSI SKODA: Octavia 1.6 (FSI), 1.8 T (Wagon) - Roomster 1.4 (TDI), 1.6 SMART: Fortwo Cabrio 0.8 Cdi (Coupé) TOYOTA: Auris 1.4, 1.6 VVTi - Avensis 1.6 VVTi, 1.8 - Aygo 1.4 HDi - Corolla 1.4, 1.6 VVTi (SW)(Verso), 1.8 VVTi - Yaris D-4 VOLKSWAGEN: Eos 1.6 - Fox 1.4 TDI - Golf IV 1.6 - Golf V 1.6 Plus (FSI) (Variant) - Jetta 1.6 FSI - Lupo 1.4 - New Beetle Cabriolet 1.4, 1.6, 1.8 T, 2.0 - Passat (Variant) 1.6 (FSI), 2.0 TFSI - Polo 1.4, 1.6 - Sharan 1.8 T - Tiguan 1.4 TSI, 2.0 TFSI - Touran 1.4 TSI, 1.6 (FSI), 2.0 FSI VOLVO: C30 1.6, 1.8, 2.0 - S60 2.4 (Optima) - S40 1.6, 1.8 - V40 1.6 (Optima), 1.8 (Optima) - V50 1.6, 1.8							
L2X 60	60	510	1	1	B13		
CHRYSLER: 300M 2.7, 3.5 (V6) DAEWOO: Lanos 1.3i, 1.5i, 1.6i - Leganza 2.0 - Nubira 1.6, 2.0 - Tacuma 1.6i FIAT: Penny D JEEP: Cherokee 4.0 - Wrangler 2.5, 3.8, 4.0 KIA: Joice 2.0 LADA: Niva 1.6, 1.7i NISSAN: Terrano 2.4 - Terrano II 2.4i OPEL: Antara 2.4							
L3B 63	63	540	1	0	B13/B15		
OPEL: Corsa B 1.5 D, TD SEAT: Cordoba 1.9 D, TD - Ibiza II 1.9 D, 1.9 TD - Toledo D, TD							
L3X 70	70	600	1	1	B13		
CHRYSLER: 300M V6 - Le Baron - Neon 2.0i (AUT.) - New Yorker 3.5V6 - Saratoga 2.5T, 3.0V6 - Stratus - Viper 8.0i V10 - Vision 3.5V6 - Voyager III 2.4 LS, 3.3 LX, 3.8V6 FIAT: Duna 1.7D HONDA: Accord 2.0TD OPEL: Antara 3.2 V6							



KOMFORT

Typ Type	Ah	A EN	Typ pólů Terminal	Uspořádání článků Layout	Uchycení Hold down	Schéma Layout	Rozměry Dimensions
L3 74	74	640	1	0	B13		
<p>AUDI: A2 1.4, 1.6 FSI - A3 Sportback 1.9, 2.0 TDI, S3 quattro - A3 Sportback 2.0 FSI (TFSI)(Quattro) - A4 1.9 TDI, 2.0 TDI (Quattro) (Avant) - TT 3.2 V6 quattro (Roadster) BMW (->'06): 118 i, 120 i, 130 i - 318 Ci Cabriolet - 318 i, 320 i CITROEN: C5 (Break) 2.0, 2.2 Hdi - C-Crosser 2.2 HDi - C8 2.2 HDi DACIA: Logan 1.5 dCi (SW) HONDA: Accord 2.2 I CTDI - Civic VI 1.7 CTDI - Civic VII Hatchback 2.2 CTDI - CRV II 2.2 CTDI - FRV 2.2 i CTDI MERCEDES: A 160, 170, 180, 200 CDI - B 150, 170 - B 180, 200 CDI NISSAN: Qashqai 1.5, 2.0 dCi, 2.0 dCi 4x4 PEUGEOT: 407 2.2 Hdi (SW), 3.0 V6 Coupè - 807 2.2 Hdi RENAULT: Clio 1.5 dCi - Espace IV 2.0 (Turbo) - Grand Scénic 1.5, 1.9 dCi - Laguna III 1.5, 2.0 dCi - Megane II 1.5, 1.9, 2.0 dCi - Modus 1.5 dCi - Thalia 1.5 dCi SEAT: Altea XL 1.9, 2.0 TDI - Cordoba 1.4, 1.9 TDI - Ibiza IV 1.9 TDI Cupra R - Leon 2.0 TDI - Toledo III 1.9, 2.0 TDI SKODA: Fabia 1.4, 1.9 TDI - Octavia 1.9, 2.0 TDI - Roomster 1.9 TDI - Superb 2.8 V6 SMART: Forfour 1.5 CDI SUZUKI: SX4 1.5, 1.6 VVT (DDiS), 1.9 DDiS TOYOTA: Auris 1.4 D-4D - Corolla 1.4 D, 2.0 D-4D (Verso) VOLKSWAGEN: Eos 2.0 TDI, 2.0 TFSI, 3.2 V6 - Golf V 1.9 TDI (Plus)(Variant) - Golf V 2.0 TDI, 2.0 FSI - New Beetle 1.9 TDI, 2.3 V5, RSI 3.2 - Passat (Variant) 1.9, 2.0 TDI - POLO 1.4, 1.9 TDI - Sharan 2.8 V6 - Tiguan 2.0 TDI VOLVO: C30 1.6 D, 2.0 D, 2.4 i, T5 - C70 Cabriolet 2.4, 2.5, T5 - S40 II 2.0, 2.4 - S60 2.4 T5, 2.5 - S80 II 2.5, 3.0 T6 AWD - V50 2.0, 2.4, T5</p>							
L4 82	82	720	1	0	B13		
<p>ALFA ROMEO: 159 3.2 JTS V6 AUDI: A2 1.4 16V, 1.4 TDI - A4 1.9 TDI, 2.0, 2.4 V6 BMW: (-> '06) 318 TD - 320D - 325i - 330i, Ci, Xi - 520i, D - 525i, D ('07-> solo per allestimenti base): 118d - 120d - 123d - 318d - 320i, d - 330i, xi, d, xd - 520i, d - 530i, xi, d, xd - 630i - X3 2.0i, 3.0si - X3 2.0d JAGUAR: X-Type 2.5, 3.0, 2.0 D, 2.2 D LAND ROVER: Freelander-2 2.2 TD4 OPEL: Antara 2.0 CDTI RENAULT: Espace IV 1.9, 2.0, 2.2, 3.0 dCi SKODA: Superb 1.9, 2.0, 2.5 TDI TOYOTA: Auris 2.0, 2.2 D-4D - Avensis 2.0, 2.2 D-4D - Corolla Verso 2.2 D-4D VOLKSWAGEN: Passat 1.9, 2.0, 2.5 TDI - Sharan 1.9, 2.0 TDI - Touran 1.9, 2.0 TDI VOLVO: C30 D5 - C70 cabriolet D5 - S40 II 1.6 D, 2.0 D - V50 1.6 D, 2.0 D - V70 2.4 D, 2.5, 3.0 - XC70 Cross Country 3.2, 2.4 D5 AWD</p>							
L5 90	90	720	1	0	B13		
<p>ALFA ROMEO: 164 D, TD AUDI: A4 3.0 V6 BMW: 325TD, TDS CITROEN: C25 D, TD 2.5 - C32 D - C35 D, TD MERCEDES: E 280, 320 (4-MATIC) - 420, 430 (4-MATIC) - E 50 AMG, E 55 AMG (4-MATIC) - 250 D (TD), 270 CDI, 290 TD, 300 D (TD), 320TDI - G 290 GD TD - G 300 TD - S 300 TD, 350 TD - 209 - 309 - SPRINTER 2-t Panel van 214, 214 NGT - 314 4x4, 314 NGT - SPRINTER 4-t Panel van 414, 414 4x4 - 208 D - 210 D - 407 D - 409 D - 507 D - SPRINTER 211 CDI, 213 CDI, 216 CDI - 210 D - 212 D - SPRINTER 308 CDI, 311 CDI, 316 CDI - SPRINTER 408 CDI 35 - 416 CDI 35, 416 CDI 46 (4x2) RENAULT: Safrane 2.5 TD VOLKSWAGEN: Sharan 1.9 TD (TDI)</p>							

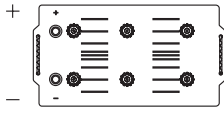
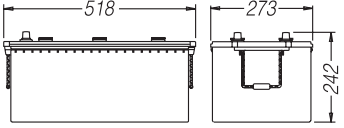


TRUCK-TOR HEAVY DUTY

Typ Type	Ah	A EN	Typ pólů Terminal	Uspořádání článků Layout	Uchycení Hold down	Schéma Layout	Rozměry Dimensions
A 120	120	850	1	3	B01-INT.		
CLAAS: Classic - Commander - Cosmos - Dominator - Jaguar - Maxi - Mercur - Senator DEUTZ-FAHR: Agroprima - Agrostar - D 25, 30, 270 - D 5006, 7006, 8006 - DX 3.70, 6.05, 6.30 - Intrac 2003, 2004 IVECO: 440 E35T/P, E38/TP - Eurocargo 75 E15 ->130 E28 MAN: 13.224 - M90 14.232->19.322 MERCEDES BENZ: Atego STEYR: 8060 - 8070 - 8080 - 8090 - 8110							
MC12 120	120	850	1	4	B03		
CARRARO A.: Tigrone Atlas 746 RS, 750, 750 RS, 765, 766 CIMAS: D.76 I - D.85 I - D.86 I - D.96 I - SF55 DEUTZ-FAHR: Agroplus 75, 85, 95 HURLIMANN: H356, 466, 496, 7600 - Prestige H/478 BDT - XT 85, 95 - XT 908 DT, 909 DT, 910.4 DT KOMAT'SU: PC 75, 95 - PW 75, 95 - SK09J2 - WB70 A/1 LAMBORGHINI: Premium 850->1060 - R6.100, 850, 904 DT, 904 DTS, 950, 955 DT, 956 - Triumph 80->100 LANDINI: DT9500 - Land Power 125->185 - Legend 120->160 - R7000 DT, 8000, 8500, 9500 SAME: Jaguar 95 Dt - Krypton 80->100 - Laser 85, 90, 100 - Leopard 85 - Minitaurus 60 - Panther 90, 95 DT - Silver 80->100 DT - Trident 130							
A 140	140	950	1	3	B01 integr.		
DAF: CF 75.290->75.360 MAN: M2000 15.185 -> 25.285 - TGM 12.284, 13.280, 15.284, 18.284, 18.334, 26.330 RENAULT TRUCKS: M 140 -> 250.16 - MIDLUM 135.07->280.18 - PREMIUM D (->12/06) - S 100.06-> 180.75 SCANIA: P 82 - P 92 - P 94 - P 230 DB - P 270 DB - P 310 DB VOLVO: FE 240 - FL 240							
B 160	160	1050	1	3	B00		
ASTRA: HD7/C IVECO: 190.33 Turbostar - 190 E27-> E42/P - 190 E43P->E52/P - 220.36 ('87->) - 240 E38->E52 - 260 E27->E43 - 330.26->330.35 ('87->) - 400 E39T/P, E43T/P - Eurocargo ('07->) 120, 130, 140, 150, 160 - Eurocargo 170 E27->320 E28 JOHN DEERE: 6510, 6610, 6910, 6920 MAN: F90 - F2000 19.293->35.464 - M90 22.361->32.342 MERCEDES BENZ: Actros - Atego 1828 L - 1850 - 2044 - 2050 - 3544 RENAULT TRUCKS: R 310->420 STEYR: 9115 base - 9125, 9145 confort VOLVO: FL 7 - FL 10 - FL 12 - FM 7 - FM 9 VALTRA: 6000 - 8000 - M serie - T serie ZETOR: 6441 - 7441 - 8441							
MC15 160	160	1050	1	4	B03		
ASTRA: HD7 64.34->64.45 CARRARO SPA: 68.2 - 78.2 - 88.2 - 98.2 DEUTZ-FAHR: Agroplus 100 - Agrotron K90->K120 FAI: Pala artic. 575, 585, 590, 595 - Terne FIAT AGRI: 550 - 600 - 650 - 800 - 850 - 1000 - 1300 FIAT ALLIS: FL10 B, 14 B - FR15 HURLIMANN: H6115, 7630, 8610 - SX 1200->2000 - XM 100->130 - XT 105, 115, 130 - XT 910.6->913 IVECO: (180.26 - 190.25, 30, 35 ->'86) - 220.35, 38 - (330.25, 26, 32, 35, 36 ->'86) KOMAT'SU: PC110R/1 - PW110R/1 LAMBORGHINI: Champion -Premium 1100, 1300 - R 1056 DT - R 1156 DT->R 1356 DT - R 4.120, 6.110 - R 4.105 -> R 7.200 LAVERDA: 3350 AL - 3450 - 3600 - 3700 - 3790 - 3890 - 3900 SAME: Antares - Bufalo - Drago - Iron - Laser - Silver 105->130 - Tiger							
B 180	180	1100	1	3	B00		
CASE IH: CVX - MXM - Puma 165->210 CLAAS: Ares - Atlas - Arion 510->540, 610->640 - Axion 810->850 DAF: CF 85 DEUTZ FAR: Agrotron 200, 215, 265 - TTV 1130->1160 - X 710, 720 FENDT: Vario 712->718, 818, 820, 922->936 IVECO: 190 E42, E52 - 190.42 Turbostar - 190.48 ('87->) - 260 E42 - 440 E42->E52 - Eurotech 190 E40->440E43 - Eurotrakker - Eurostar 240E27->440E52 - Stralis JOHN DEERE: 6530->6930 - Premium 7430, 7530 LAMBORGHINI: R6 VRT 150.7, 160.7 - R7.200 - R8.230 - R8.270 MAN: F2000 41.364->41.463 - TG/A - TGS - TGX MERCEDES BENZ: Axor NEW HOLLAND: T 7030->7060 RENAULT TRUCKS: AE 380->520 - AE Magnum 390->560 - Magnum E-tech - Magnum 400.18 ->480.19 - Premium D ('06->) - Premium R - Kerax SAME: Iron 130->185 - Iron Continuo 150.7, 165.7 SCANIA: P114, 124 - R114, 124, 144, 164 - T114, 124, 164 STEYR: CVT 120, 130, 150, 170 VOLVO: FE 280_18->320_26 - FH 12 - F 16 - FL 280_11.5->280_18 ('06->) - FM 9.340 - FM 9.380 - FM 10 - FM 12 - FM260->FM480 ('06->) - NH 12							
MC15 185	185	1200	1	4	B03		
ASTRA: HD7 66.45, 84.38, 84.45, 86.45 CASE IH: CVX 140->195 FIAT AGRI: 160.90 DT - 180.90 - 1580 DT - 1880 FIAT ALLIS: FD20 - FE20 - FL20 HURLIMANN: H6170T - H6670, 6680, 6690 - H7650 LAMBORGHINI: 1506T - Racing 150, 165, 190 LAVERDA: 3400 - 3550 MENARINI: 110 L - 370.12.35 NEW HOLLAND: 7250->7550 SAME: Galaxi 170 - Hercules 160 Dt - Laser 150 - Supertitan - Titan							



TRUCK-TOR HEAVY DUTY

Typ Type	Ah	A EN	Typ pólů Terminal	Uspořádání článků Layout	Uchycení Hold down	Schéma Layout	Rozměry Dimensions
CX 200	200	1150	1	3	B00		

DAF: XF 95 - XF 105 **DEUTZ-FAHR:** D 40S, 400, 540 **FIAT ALLIS:** BD20 - T 360, 460 - TL 30, 40, 160, 260, 545, 546, 562, 645 - TS 160, 260 **HANOMAG:** 14D - 18C - K 12C, 15, 16
INBUS: S150 - U150 - U210FT - Y210 **IVECO:** Stralis Euro5 **MENARINI:** 418 AC - 419 AL **MERCEDES BENZ (Bus):** 0305 - 0307 - 0404 - 0405 - 0409 - Integro **NEOPLAN SCANIA:** Bus
SETRA: Bus

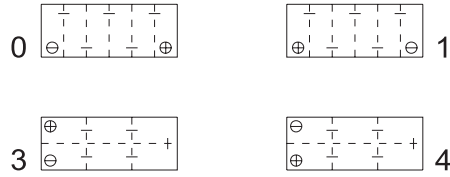


TRUCK-TOR STARTER

Typ Type	Ah	A EN	Typ pólů Terminal	Uspořádání článků Layout	Uchycení Hold down	Schéma Layout	Rozměry Dimensions
G28 100	100	720	1	0	B03		
<p>CARRARO A: Ergit - Supercar - Tigre - Tigrecar - Tigrone CARRARO SPA: Agri Plus - 48.2 - 58.2 - 502 - 505 - 520.5 - 604 - 605 C - 655 CL - 720.5 CASE IH: JXC 1070->1095 - JX Quantum 85 C, 95 C CLAAS: Nectis 227->267 DEUTZ-FAHR: Agrolux 57, 60, 67, 70 - Agroplus 60 FERRARI: System 55->80 - Thor GOLDONI: Trattori serie 3000, Compact, Star 65, 75, 85 - Universal - 4000 Quadrifoglio HYUNDAI: Santa Fe 2.2 CRDi (4x4) - Sonata V 2.0 CRDi - H1 Autobus 2.5 CRDi ('06->) HURLIMANN: H358, 362, 372, 468/4, 476, 478, 488, 5650, 5660 - XA 56->86 - XE (F) Tradition 55, 70 - XA 656 DT, XFH JOHN DEERE: 4055 - 4255 - 4555 - 4755 - 4955 - 5210->5410 - 5215->5515 KUBOTA: M 6800, 8200, 9000 LAMBORGHINI: C 353->874/90 - Crono - Crono Target - Cross - Grimper - Plus - R483->804 - Sprint LANDINI: Alpine - Atlantis - Atlas - Discovery - Ghibli - Globus - Mythos - Powerfarm - Rex - Trekker - Vision LEXUS: LS 400 I V8 MAZDA: 626 2.5 I V6, 2.0 D - 6 Atenza 2.0 CDVI - MPV 2.0 CDVI MC CORMICK: C 50->80 - CX 70->100 - CX 75, 85, 95, 105 - CMAX 60->105 - F60_4->100_4 - MC 80->100 MITSUBISHI: Pajero 2.5 TDI, 3.2 TDI - Outlander 2.4 Mivec - Grandis 2.0DI-D NEW HOLLAND: T 4020->4050 - TF 4030->4050 - TNFA 75->95 - TNVA 60->95 NISSAN: Patrol GR III 2.8, 3.0 DDTI - Sunny III 2.0 SLXD PASQUALI: Cronos - Ergo - Mars SAME: Argon (Classic) - Aster - Aurora - Centurium - Explorer 70c->90c - Frutteto - Rock - Solar TOYOTA: Previa 2.0 D-4D VALPADANA: 4570, 4580, 4590 - Climber - Frutteto - Multitrac</p>							
G28X 100	100	720	1	1	B01		
<p>GOLDONI: Serie Euro (93->) - Serie Transcar (->97) HYUNDAI: H 200 D KIA: Carnival 2.9 TD - Pregio - Sorento 2.5 D - Sportage 2.0 TDI KUBOTA: M 4000, 4050, 4500 MITSUBISHI: Pajero III 3.5i GDI V6 24V 2.5 TDI - L200 2.5 D - Lancer 2.0 D - Space Gear 2.5 TDI NISSAN: Terrano II 2.7 TDI (4x4) - Trade TOYOTA: Land Cruiser 3.0 TDI D</p>							
CB 110	110	850	1	0	B00		
<p>CASE IH: JX75->95 - JXU70->100 - MXU100->125 CLAAS: Ares 546->566, 547->657 - Celtis 426->456 IVECO: Daily2000 (->'06) - Eurocargo Tector 60E13->150E28 MASSEY FERGUSON: MF 135, 185, 265, 410, 510, 620, 1020, 1505, 2205, 2720, 4200, 4435->4455 - 8250 MC CORMICK: XTX 150->185 NEW HOLLAND: TDD75->95 - TSA 110->135 NISSAN: Cabstar ('07->) 28.11, 32.11, 35.11, 35.13, 35.15, 45.13, 45.15 RENAULT Agriculture: Ceres - Cergos - Ergos - Temis 550, 560 RENAULT TRUCKS: Mascot 110.35->160.65 - Maxity 150.35, 150.45 VOLVO: FL Serie</p>							
CH 125 625 103 076	125	760	1	0	B00		
<p>ALLIS CHARMERS: TL 12, 16, 645 ATLAS COPCO: XA 60, 80 - XAS 60, 80 BEDFORD: TL 1000, 1500, 1600 - TM 3650, 3800, 4400 DAF: CF 65 - LF 45 - LF 55 FORD: Cargo-serie (->'80) - Transcontinental serie LEYLAND: Chieftain - Cruiser - Marathon - Mastif - Supermastif MASSEY FERGUSON: MF 174C, 274C, 393, 665, 845, 1100, 1550, 2135C</p>							

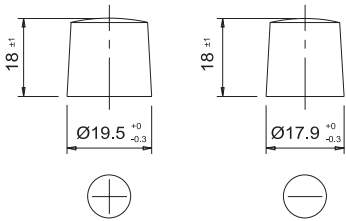
USPOŘÁDÁNÍ ČLÁNKŮ LAYOUT

12 Volt

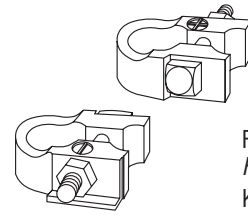
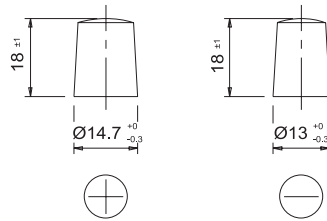


TYP PÓLŮ TERMINAL TYPE

TERMINAL 1

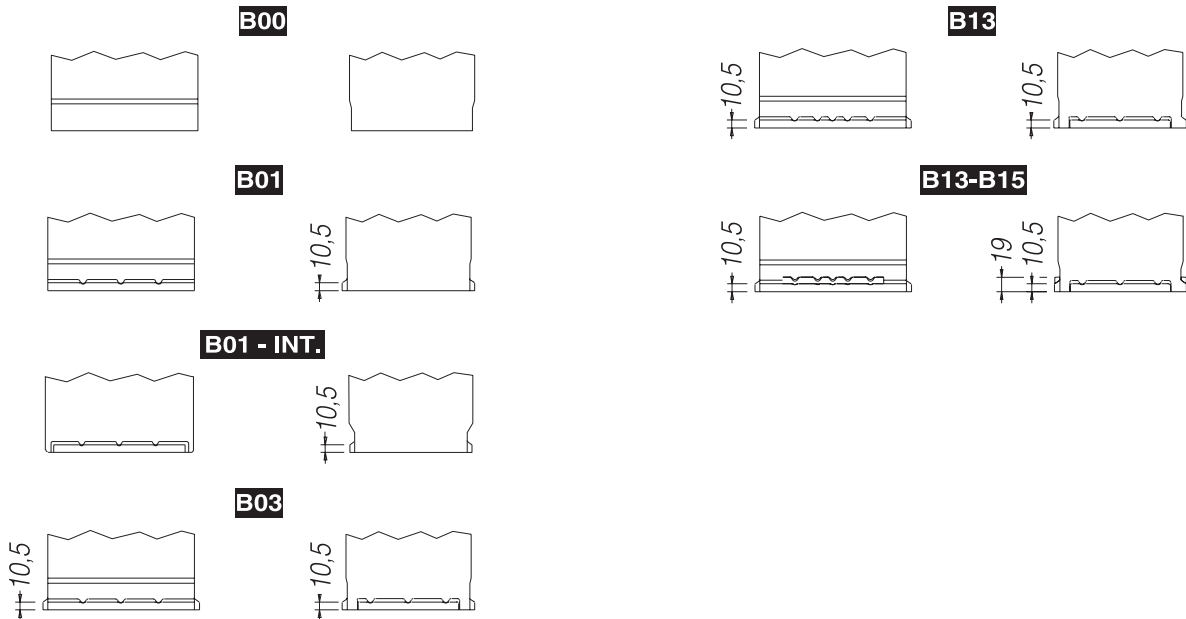


TERMINAL 3



Ford adaptéry
Ford terminal adapter
Kód/code: 395001

UCHYCNÍ HOLD DOWN



ODMÍTNUTÍ ODPOVĚDNOSTI DISCLAIMER

Přes veškerou pozornost věnovanou přípravě tohoto katalogu, uvedená osazení představují pouze technická doporučení. AKUMA nenesé právní odpovědnost za případné nesrovnalosti.

Whilst every care is taken in preparing this catalogue; the indicated main applications represent only technical recommendations. FIAMM cannot accept any legal liability for inaccurate information.

Headquarters

FIAMM Spa

Viale Europa 63
36075 Montecchio Maggiore (VI)

ITALY

Tel +39 0444 709311
Fax +39 0444 699237

www.fiamm.com

Starter Batteries, Plant and Commercial Offices

FIAMM Spa

Viale del Lavoro 20
37040 Veronella (VR)

ITALY

Tel. +39 0442 489111
Fax +39 0442 489162

info.starter@fiamm.com

AKUMA®
B A T E R I E